

CITY OF CLINTON

ORDINANCE NO. 611

RECOMMENDATION BY CPC: X FOR ADOPTION
_____ AGAINST ADOPTION;

DATE: January 11, 2016

PUBLIC HEARING HELD: February 22, 2016

PUBLIC NOTICE PUBLISHED: _____
in Clinton Courier-News

1st READING: January 25, 2016

2nd READING: February 22, 2016

AN ORDINANCE AMENDING THE "ZONING ORDINANCE OF THE CITY OF CLINTON, TENNESSEE" BY REZONING A PORTION OF PARCEL 10.00; ANDERSON COUNTY TAX MAP 082 FROM M-2 (HEAVY INDUSTRIAL DISTRICT) TO B-2 (GENERAL BUSINESS DISTRICT)

WHEREAS, the Clinton City Council, in accordance with Section 13-7-204 of *Tennessee Code Annotated*, may amend the zoning ordinance and the "Zoning Map of Clinton, Tennessee"; and

WHEREAS, the Clinton Municipal Planning Commission recommends the zoning amendment to correct the exclusion of this property from a rezoning ordinance previously recommended and passed in 2009 by the Clinton City Council;

WHEREAS, the Clinton Municipal Planning Commission has forwarded its recommendation to the Clinton City Council regarding the amendment to the "Zoning Map of Clinton, Tennessee";

NOW, THEREFORE BE IT ORDAINED by the City Council of Clinton, Tennessee that:

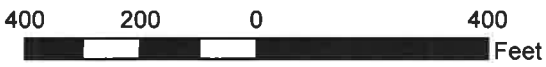
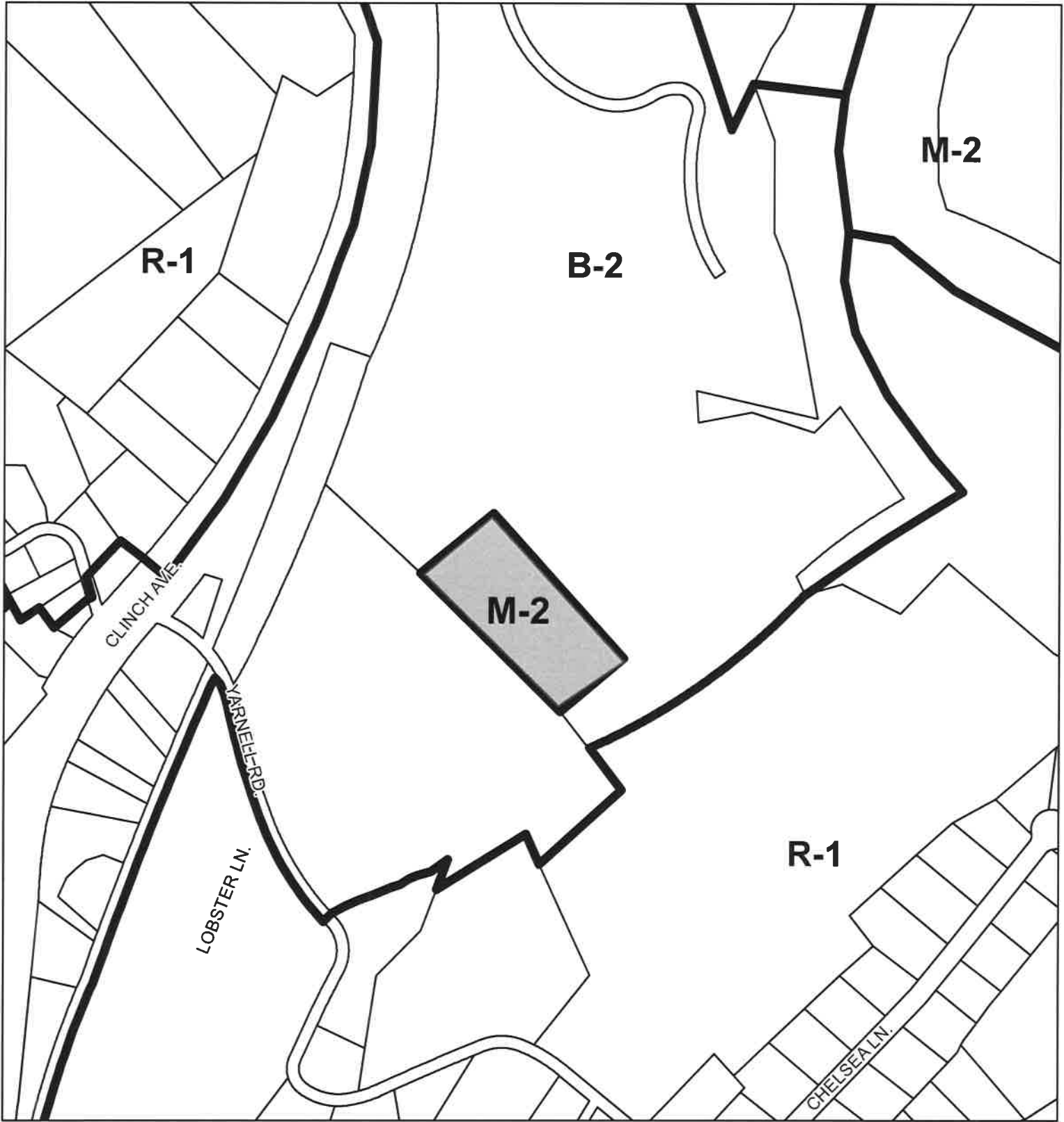
Section 1. The Clinton Zoning Map is hereby amended by rezoning Parcel 10.00 of Anderson County Tax Map 082 from M-2 (Heavy Industrial District) to B-2 (General Business District). Said territory located off Yarnell Road; and being more clearly defined by the attached map that is made a part of this ordinance:

Section 2. This ordinance shall be effective from and after its passage and publication, as required by Section 13-7-203 of *Tennessee Code Annotated*, the public welfare requiring it.

Adopted this 22 day of February, 2016.

[Signature]
City Recorder

[Signature]
Mayor



 PROPOSED REZONING AREA

PROPOSED REZONING - M-2 TO B-2

Clinton, Tennessee

Map prepared by:
East Tennessee Development District
Geographic Information Systems
Alcoa, TN
Map printed: January 6, 2016
This is not an engineering map.

Map Attachment For Ordinance # 611

